



Session Notes

Leaders in Education - Trauma-Sensitive Schools: Part 1

PRESENTER
Becky Haas

SPONSORED BY
QuaverEd

Episode Description

This session will focus on what trauma is, and how it presents itself in a school setting.

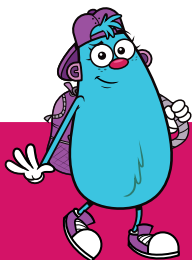
Directions:

As you watch the video, please take notes surrounding each question. After the session, take some time to reflect on your notes, and how trauma might impact your school.

	Reflection	Notes
1. What is trauma?		
2. What are ACEs and how do they relate to trauma?		
3. What is toxic stress?		

Leaders in Education - Trauma-Sensitive Schools: Part 1

	Reflection	Notes
4. How can trauma present in a school setting?		
5. What steps can educators make to identify trauma in their classrooms?		



Sign up for FREE access to these resources and many more at
[QuaverEd.com/Preview](https://www.QuaverEd.com/Preview).